

HARTFORD 2000



HARNESSING THE INDIVIDUAL AND COMBINED POWER OF OUR NEIGHBORHOODS

YOU CAN CHANGE YOUR WORLD

Would you like to learn how to run more effective meetings, resolve conflicts, master public speaking or build business relationships?

The Neighborhood Training Institute kicked off a new season with a dynamic 10-week Leadership Training course – a collaboration of Hartford 2000, the Hartford Economic Development Commission and Leadership Greater Hartford. The Catalyst Endowment Fund at the Hartford Foundation for Public Giving provided the initial funding to make this course possible.

The 2001-2002 topic for the Catalyst Foundation was exploring leadership in the Greater Hartford region. This led to its decision to fund leadership training at the neighborhood level.

Courses are aimed at helping participants learn to:

- Understand group communications
- Run effective meetings
- Resolve conflicts
- Speak in public
- Build business relationships
- Understand economic development
- Work with your personal style
- Build teams to get things done
- Develop other leaders

Continued on page 2



Unsung Heroes Awardees (l-r): Edie Lacey, Hartford 2000 co-chair and award presenter; Joe Barber, H2K Community Economic Development Committee; Mulu Deres, City of Hartford Neighborhood Planner and Captain Terry Waller of the Hartford Fire Department.

AWARD WINNERS

Several Hartford 2000 activists were honored at Upper Albany's third annual Unsung Heroes Awards Ceremony this spring. Held at the Artists Collective, the event honored Captain Terry Waller of the Hartford Fire Department, Joe Barber, co-chair of the H2K Community Economic Development Committee, and Mulu Deres, City of Hartford Neighborhood Planner, along with other individuals who have worked hard to make the Hartford community a better place.

Gerald Thorpe, chairperson of the Upper Albany Revitalization Association, gave the opening remarks. Mayor Eddie Perez, First Lady Maria Perez and Hartford Council Majority Leader Elizabeth Horton Sheff presented awards.

Congratulations to all our winners for your dedication and tireless efforts to improve our communities. ★



For more information about Hartford 2000 or the Neighborhood Revitalization Zone program, please contact us at (860) 249-1416, or write to us at: Hartford 2000, 32 Elm Street, Hartford, CT 06106. You also may check out our Web site at www.hartford2000.org, or e-mail us at: Htfd2000@aol.com.





"You Can Change" Continued from page 1

Participants must be a Hartford resident or business owner over age 21 and have the enthusiasm and commitment to making our neighborhoods a better place to live in. At the end of the program, participants will be ready to deal with issues in their Neighborhood Revitalization Zone that are important to the community.

If you've been an active church member, involved with your local Parent Teacher Association (PTA), or the person who gets everything organized for family and friends, the Institute may offer a leadership program for you. Other workshops are being planned for the future.

For more information, contact Glenn Geathers, Hartford Economic Development Commission, 11 Asylum St., Suite 501, Hartford, CT 06103, (860) 549-8843. ★

YOU ARE INVITED

Hartford 2000's 5th Anniversary Celebration

Thursday
November 21, 2002

5:30 - 8 p.m.

Elizabeth Park Pond House

Call (860) 249-1416
to RSVP

HELPING YOU CHANGE YOUR WORLD

The Neighborhood Training Institute (NTI) is gearing up for its third season of dynamic workshops with a continuation of the *Understanding City Services* series, and a field trip to Providence, Rhode Island.

This past spring's workshop series, *Understanding City Services*, was a rousing success. Among the well-attended workshops were:

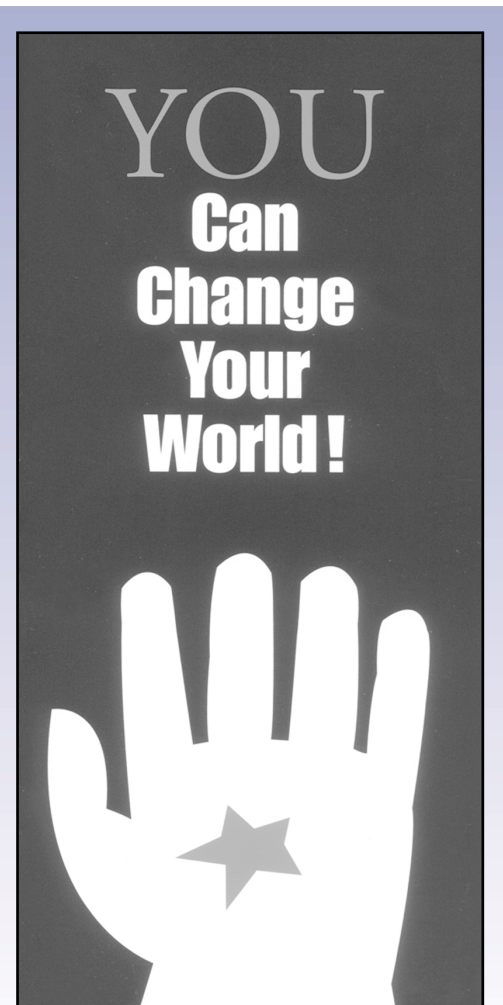
- *The Redevelopment Agency* explained the responsibilities of the Agency and described the redevelopment plans that are currently in place. It also addressed how the Agency can help NRZs to bolster their communities.
- *Licenses and Inspections Department* provided information on the complexities of the department. The session was so popular that a follow-up session will be offered for more dialogue between workshop participants and department staff.
- *Property Acquisition and Disposition Functions* offered insight into the City's philosophy of acquiring, managing, and disposing of properties – most of which have been abandoned and are a blight on their neighborhoods. Participants learned about the procedures and the type of project planning needed to take advantage of this resource.

The NTI also co-sponsored, with the Connecticut Department of Environmental Protection, a day-long seminar on *Smart Growth* that explained the idea of making changes in a community without ruining its character. Real-life examples of concepts that have been successfully applied were also discussed. Topics included the impact of transportation decisions on retail businesses, how other countries use the Smart Growth concepts in their development, pedestrian

friendly designs, and comparisons of rural, suburban, and urban Smart Growth efforts.

Neighborhood Training Institute workshops are planned and implemented by the Community Economic Development Committee of Hartford 2000 in collaboration with the Hartford Economic Development Commission (HEDC) and the City of Hartford.

For more information on the workshops and trip, contact Glenn E. Geathers, Hartford Economic Development Commission, 11 Asylum Street, Suite 501, Hartford, CT 06103. ★



Cover of Neighborhood Training Institute brochure.

HARTFORD'S WEST END

By Stephanie Woodlock

In the years before I moved to Hartford's West End, I considered moving to the city on a couple of occasions, but didn't. Still, I always felt its pull even when the reasons not to move here seemed compelling.

When I first moved from Philadelphia to work in Hartford, I was staying in an East Hartford motel. My first thought was I'd like to live in the West End. None of my colleagues lived in the city at that time. Furthermore, none of them advised living in the city. In fact, they all adamantly recommended against it. Did they advise me from personal experience? I think not. Most of them never came to the city and were happy to tell you so. But I was swayed by the strength of their convictions, unfounded or not. And so, I took their advice and moved to Manchester.

In my free time, I drove around a lot trying to become familiar with the Hartford area. I can remember driving up Farmington Avenue and admiring the beautiful 1920's apartment buildings. I discovered Kenyon Street, which to my eye is still one of the prettiest streets in the metro area.

After a year living in Manchester, I moved to an apartment near Hartford's West End in West Hartford. I chose West

Hartford largely on prices. While apartments were more expensive in West Hartford than in Hartford, the high auto insurance rates in the city made living in the suburbs more affordable for renters at that time. High auto insurance rates remain a problem for city residents today.

While I lived in West Hartford, I often shopped in Hartford's West End, attracted by the eclectic mix of shops and restaurants. In the early 90's, the West End had a thriving little commercial district that included independent businesses – like Cheese & Stuff, The Reader's Feast bookstore and restaurant – which were different than the usual suburban chains. Unfortunately since then many of these businesses have moved or closed. In the last couple of years, this trend has begun to reverse itself, though the West End still has no replacement for Cheese and Stuff.

Walking home from my forays to the West End, I would choose various routes that let me admire the houses on many different streets. For those like me who are enamored of the architectural styles of the later 19th and early 20th centuries, there really is not a bad street in the neighborhood.

But, it wasn't until 1998 that I finally moved to the West End. With trepidation,

I decided to buy a small house, south of Farmington Avenue. I was worried about crime, resale and how much it would cost to repair an old house.

Four years after I moved in, I still love my house and the neighborhood. These days, I am less worried about crime (not any worse than in many suburbs) and more worried about the school system. I have learned to live with a house that from time to time offers up new challenges to the non-adept handy person. I find I have stopped listening so hard to the real estate market.

There are many reasons to live in Hartford's West End: proximity to arts and culture, walkable neighborhoods, beautiful architecture, shopping adventures and, of course, the people. There's a sense here in the city that we are all in it together – a sense of community that I found largely missing in the suburbs. And that's one of the main reasons I plan to stay. ✦



WANT TO VOLUNTEER FOR A COMMITTEE?

We encourage community members who want to make a difference in their neighborhoods to participate on Hartford 2000's committees:

Communications: Oversees production of the newsletter and public relations activities.

Community Economic Development: Operates the Neighborhood Training Institute which presents workshops and

seminars on revitalization, government services, neighborhood improvement, and other topics of interest to NRZ members.

Government Relations: Works with the City of Hartford and the State of Connecticut to educate NRZs and resolve issues relating to neighborhood revitalization.

Personnel and Finance: Oversees the use of funds, develops policies and manages contracts for Hartford 2000. ✦

SHARE YOUR IDEAS

Any individual or representative of an organization who supports the mission of Hartford 2000 may become a member. Everyone is welcome and encouraged to attend Hartford 2000 meetings and to participate fully in all discussions.

For information call (860) 249-1416.



HARTFORD'S NEIGHBORHOOD REVITALIZATION ZONES

Asylum Hill

Asylum Hill Problem Solving Revitalization Assoc.
Jennifer Cassidy, Chair
(860) 278-9398; j.cassidy@snet.net
Meetings: First Monday, 6:30 PM
Asylum Hill Congregational Church

Barry Square

Maple Avenue Revitalization Group (MARG)
Imani King, Chair
(860) 997-2044; weavwisdom@aol.com
Meetings: Second Thursday, 6:30 PM
Alchemy Juice Bar, 203 New Britain Avenue

Blue Hills

Blue Hills Civic Association
Carolyn Brooks Burton, Chair
(860) 243-8734; cburton01@snet.net
Meetings: Fourth Wednesday, 6:30 PM
Mt. Sinai Campus Community Room, St. Francis Hospital

Clay Arsenal

Clay Arsenal Revitalization Association
Betty Hardy, Chair
(860) 724-5478; Bjhardy43@aol.com
Meetings: Second Tuesday, 6 PM
SAND Library

Frog Hollow South

Frog Hollow South
Edie Lacey, Chair
(860) 549-7158; Elacey1@aol.com
Meetings: Fourth Tuesday, 6:30 PM
Learning Corridor, Commons Building
Cafeteria, Vernon St.

WHAT IS HARTFORD 2000?

Hartford 2000 is a coalition of Neighborhood Revitalization Zone committee members and City of Hartford representatives who come together to share ideas, resources and information, and work cooperatively to revitalize Hartford's neighborhoods. It is the first forum in many years to bring residents from throughout the city together at one table.

Founded in 1997, Hartford 2000 evolved into an effective forum for neighborhoods to develop working relationships, learn from one another, and provide the City of Hartford with input and assistance on projects promoting neighborhood stabilization and revitalization. The City government uses Hartford 2000 as its principal vehicle for soliciting community involvement in decision-making on neighborhood development. ✦

Northeast

Northeast Revitalization Association
Helen Nixon, Chair
(860) 247-5788
Meetings: Second Monday, 5:15 PM
Club Pyramid, 3155 Main Street

North Frog Hollow

North Frog Hollow
Jorge Rivera, Chair
(860) 525-5222
Meetings: Second Thursday, 6 PM
Location Varies

Parkville

Parkville Revitalization Association
David Morin, Chair
(860) 830-5292; barridoncorp@aol.com
Meetings: Second Wednesday, 6 PM
Parkville Community Center, 11 New Park Ave.

Sheldon/Charter Oak

Coalition to Strengthen the Sheldon/Charter Oak Neighborhood (CSS/CON)
Carol Coburn, Executive Director
(860) 249-1416; carol.coburn@hartnet.org
Bernadine Silvers, President
(860) 548-1961; bsilvers@sheldonoak.org
Meetings: First Monday, 5:30 PM
CREC, 111 Charter Oak Ave.

South Downtown

South Downtown (SoDo)
Allen Ambrose, Chair
(860) 727-8031; allen@ambrosedg.com
Frank Lord, H2K Representative
Frank_lord@hopgoodgroup.com
Meetings: Second Tuesday, 6:30 PM
South Congregational Church, 277 Main St.

South End

South End Neighborhood Revitalization Association
Carl Williams, Co-Chair
(860) 296-7380; bwill@aol.com
Kathy Kosmaler, Co-chair
katkos@worldnet.att.net
Meetings: First Thursday, 6:30 PM
Metzner Community Center, 680 Franklin Avenue

South Green

South Green
Vivian Zoe, Chair
(860) 724-7151; vfzoe@snet.net
Meetings: Fourth Monday, 5:30 PM
29-31 Annawan Street, Apt. F-1

Upper Albany

Upper Albany Revitalization Zone Organization (UARZO)
Gerald Thorpe, Chair
(860) 727-9830; risi@mail.hartford.edu
Meetings: First Monday, 6:00 PM
Albany Branch Library

West End

West End Civic Association
Carl Dudley, Chair
(860) 236-9794; cdudley@hartsem.edu
Stephanie Woodlock, H2K Representative
(860) 231-9822;
Stephanie.woodlock@hs.utc.com
Meetings: First Tuesday, 7 PM
80 Sherman Street

OUR MISSION:

To strengthen the individual and collective power of Hartford's Neighborhood Revitalization Zones (NRZs).

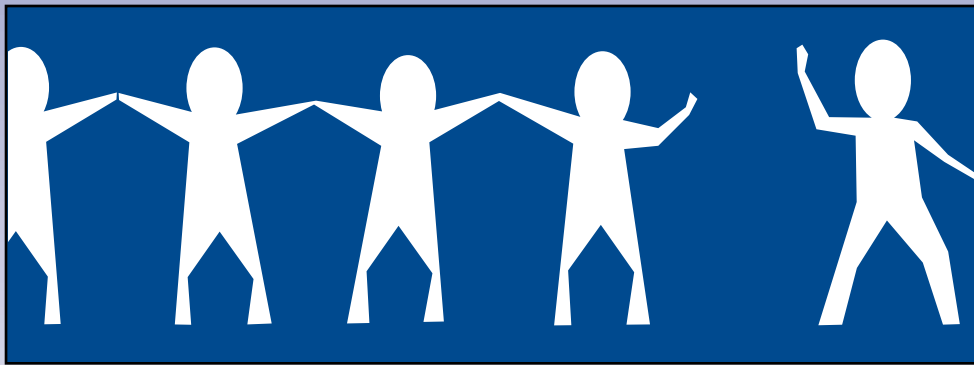
Hartford 2000 also supports the work of NRZs by generating support for the program and process, educating the community, advocating important issues, fostering communication with outside entities, maintaining momentum of revitalization efforts, and promoting and facilitating project cooperation and collaboration. ✦

If you have ideas about Hartford development or neighborhood strategic plans, contact the City of Hartford's Chief Planner:

James Sequin
AICP, Chief Staff Planner
550 Main Street, Hartford, CT 06103
Phone: (860) 757-9040
Fax: (860) 722-6402
E-mail: jsequin@ci.hartford.ct.us

Hartford 2000 thanks its partners, funders, and sponsors for their ongoing support.

- Annie E. Casey Foundation
- Catalyst Endowment/Hartford Foundation for Public Giving
- Citizens Research Education Network (CREN)
- City of Hartford
- Connecticut Department of Economic and Community Development (DECD)
- Connecticut Department of Environmental Protection (DEP)
- Connecticut Urban Legal Initiative (CULI)
- Hartford Economic Development Commission (HEDC)
- Hartford Public Library



FAREWELL FRIEND

Annette Liseno, Hartford 2000's long-time partner with the Hartford Economic Development Commission, has moved to Ethiopia for a two-year adventure. We surprised her with a cake and a certificate of appreciation at our July meeting. In an emotional thank-you, Annette told members "I truly mean it when

I say that you're the most wonderful group of people I've ever had the privilege of working with. Thank you for accepting me into your community and for giving me the opportunity to work alongside you. You're wonderful friends and I will miss you." We will miss you, too, Annette! ✨

FALL 2002

6

CHECK US OUT

If you'd like more information about Hartford 2000, please check out our website at www.hartford2000.org or

Contact Linda A. Bayer, 32 Elm Street, Hartford 06106, (860) 249-1416, Fax (860) 247-1846, Email: Htfd2000@aol.com.

The public is welcome to join our meetings on the third Thursday of every month at the Hartford Public Library, (Hartford Collection Room), 500 Main Street, at 5:30 p.m.



WWW.HARTFORD2000.ORG

c/o City Manager's Office,
550 Main Street,
Hartford, CT
06103

